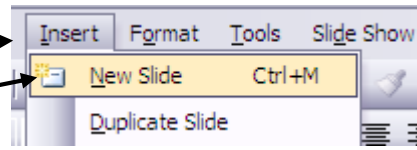


Adding New Slides

Add a new slide;

1. Click **Insert**
2. Click **New Slide**
3. Select a Layout



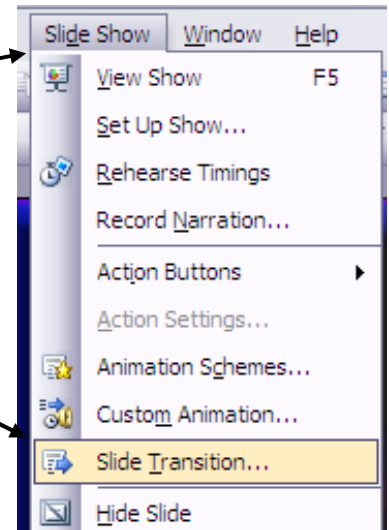
Keyboard Short cut **Ctrl and M**

Slide Transition

A Transition occurs when the slideshow moves from one slide to another.

Add a Transition;

1. Click **Slide Show**
2. Click **Slide Transition**



3. Select a Slide Transition
4. Select the transition Speed
5. Add a sound effect to the Transition
6. Select how the slide will advance
7. Select the time if choosing automatic
8. Preview

